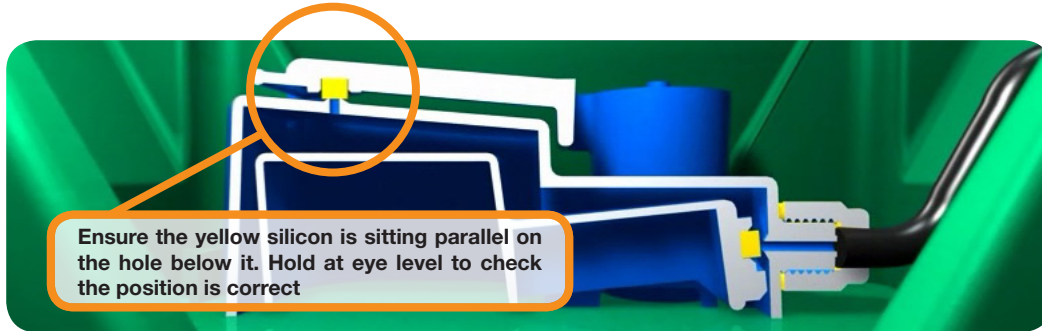


AQUAvalve™

simple
guidelines



Ensuring that the AQUAvalve floods and drains correctly

Making sure your AQUAvalve floods and drains correctly is simply achieved and only takes a few seconds.

Hold the AQUAvalve at eye level so that you can see the yellow silicon fitted to the top float resting on the hole below it. The yellow silicon must create a tight seal when touching the hole.

If it looks like it is not sitting parallel on the hole below simply lift the top float and apply pressure to one side of the yellow silicon, drop the float and hold at eye level again. Repeat the procedure again if necessary.

Use the AQUAvalve image above as a guide.

Carrying out the simple procedure above will ensure that your AQUAvalve floods to approximately 20mm and drains completely before it re-fills the tray. Generally the above procedure is only necessary when you have taken your AQUAvalve apart for cleaning purposes & then re-assembled it. It is however prudent to check the position of the yellow silicon when the AQUAvalve is new.

1 At the end of your growing season clean the AQUAvalve using warm soapy water. Using an old tooth brush will help.

The AQUAvalve is easily disassembled. The top float will slide all the way across and the bottom float is unclipped from its pivoting position. The circular discs fitted to the top float can also be removed by using pliers to grip the raised point.

At this point it is advisable to remove the yellow silicones to avoid them being lost.

2 It is also handy to have a paper clip at hand so that you can push it through the AQUAvalve nozzle, this will remove any lime scale build up that may have occurred during the growing season.

Blowing through the AQUAvalve nozzle will also help to remove any build up. Do not under any circumstances use a drill & drill bit to clear the AQUAvalve nozzle.

This will potentially damage the AQUAvalve beyond repair.



2 Pot
Extension Kit

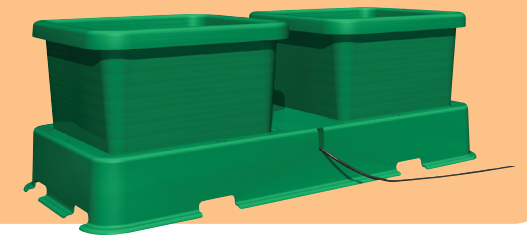
setup
instructions

1

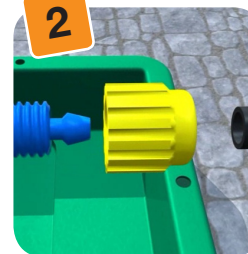
Ensure that all the parts are supplied by checking the contents list.

easy2grow Extension Kit contents list (Ref AP204/SQ):

- 1x 2Pot tray and lid
- 2x 8.5 litre pots
- 1x AQUAvalve
- 2x Root Control Squares (Black & Gold)
- 2x Marix Squares (Black)
- 1x 1.5 meters of 6mm pipe
- 1x 6mm T
- 1x Full Instructions



2



- 2.1 Remove the yellow collar from the AQUAvalve nozzle. Thread one end of the 6mm pipe through the yellow collar.
- 2.2 Then push the 6mm pipe onto the AQUAvalve nozzle, dipping the end of the pipe in warm water for a few seconds, will make it much easier.
- 2.3 Once the pipe is connected re-screw the yellow collar onto the nozzle.

Advice

DO NOT over tighten the yellow collar. When you feel resistance **STOP**. Over tightening can cause damage to the collar or AQUAvalve nozzle.

3

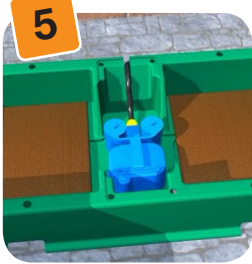


- 3.1 Connect the AQUAvalve to the 2Pot tray by lowering the AQUAvalve so that the "Half-Moon" at the bottom & back of the AQUAvalve locates with the T section in the 2Pot tray.
- 3.2 Push firmly to ensure the AQUAvalve is secured when lifting the AQUAvalve the 2Pot tray should lift too.



4

- 4.1 Connecting the extension kit to your existing easy2grow Kit is straight forward and will only take a few minutes.
- 4.2 Take a pair of scissors and cut the pipe fitted to the easy2grow Kit & then connect it back together again by using the 6mm T supplied with your extension Kit.
- 4.3 Then attach the pipe from the extension Kit to the third part of the 6mm T.



5

- 5.1 Take the two Gold & Black Root Control squares and place them into each cavity in the 2Pot Tray. **GOLD FACE UP.**



6

- 6.1 Then take the two Black Marix squares and place them into each 8.5 litre pot.



7

- 7.1 Next fill each pot with a substrate/soil 2-3cm below the height of the pot.

Advice Suggestions are as follows:

70% good quality compost /30% perlite, all freely available from your garden centre. Many other types of soils and mixes of soils can be used with the easy2grow kit but to ensure excellent results follow the suggestion above.



8

- 8.1 Take your plants and place them in the pots.
- 8.2 Water the plants through so that water is draining from the bottom of the pots.
- 8.3 Allow to drain for up to 15 minutes.



Ask Josh...

to find useful information and answers to common questions...
www.autopot.co.uk



9

- 9.1 Before you place your pots in the 2Pot tray make sure you remove any substrate/soil from the bottom and side of the pots. Using a small hand brush will make this job easy.

Advice If not cleaned properly the valve may become blocked.

- 9.2 Once you are happy they are clean place them in the tray.

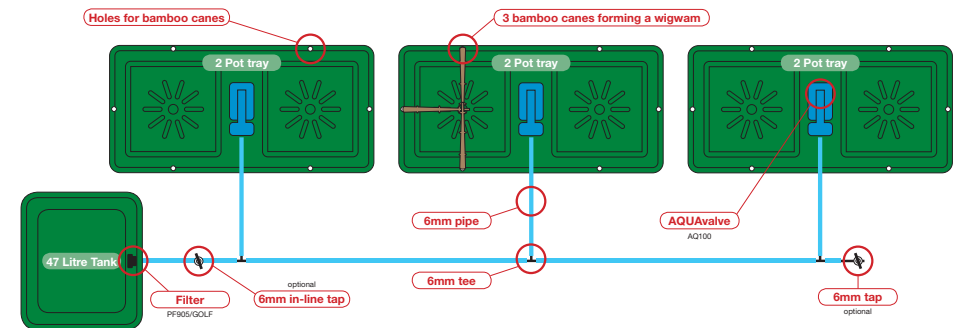
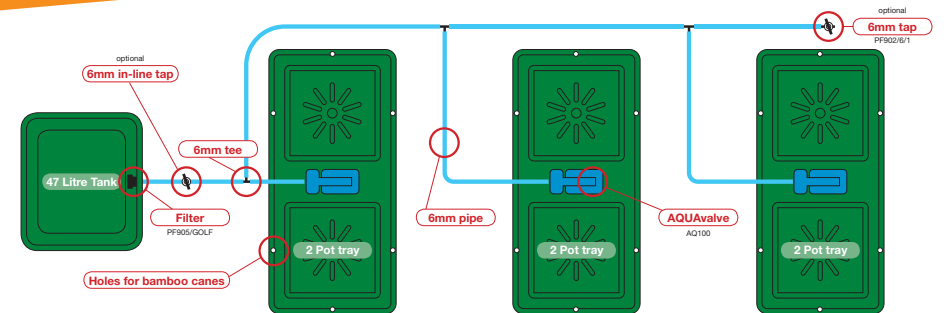


10

- 10.1 Place the green lid in between the green pots. So the lid can be easily removed place it between the pots so that the 4 studs are facing upwards.

2 typical layouts

Extending your easy2grow Kit



AutoPot recommends that a maximum of 3 trays are attached to the easy2grow Kit 47 ltr tank.